

Demonstration Guide for the Epson Stylus[®] NX Series Printers



NX300
Best for home office



NX400
Best for home photo

Overview

This document includes step-by-step instructions for demonstrating some of the stand-alone printing features of the Epson Stylus NX300 and Epson Stylus NX400. All the exercises can be performed without a computer.

If you're using a store unit, restore all printer settings to the factory default before beginning any demo. On the NX300, press the Copy/Fax button, press the Menu button, select Restore Default Settings, and press OK. To reset all settings, press OK again. On the NX400, press the Setup button, scroll left until the display reads "To restore Default Settings Press OK". Press OK. Press OK again to confirm, then OK to exit the setup menu.

This Demo Guide includes the following:

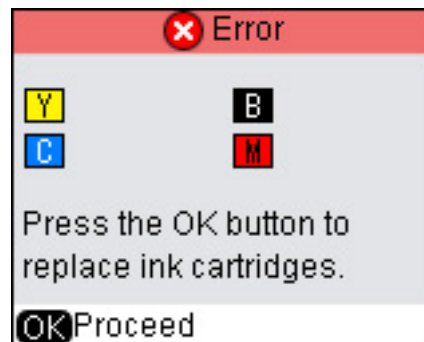
NX400—Replace Ink Cartridges	3
NX400—Using the Actuator	5
NX300—Copying a Two-Page Document Using the ADF	6
NX400—Copying a Two-Page Document Two-Sided.....	7
NX400—Demonstrate Photo Restoration	8

You'll note there's no exercise for demonstrating Auto Photo Correction. That's because this feature (Fix Photo) and red-eye removal (Fix Red Eye) are enabled through the printer driver when printing from a computer.

NX400—Replacing Ink Cartridges

In this exercise, you'll learn the various ways to change the ink cartridges on the NX400 and perform other in-store maintenance.

There are several ways to replace ink cartridges in the NX400. Often, when you enter the store for your shift, the printer's control panel will inform you one or more of the ink cartridges needs to be replaced. If this happens, you would simply press OK and then follow the instructions below.



In this exercise, you'll force an ink cartridge change:

1. On the NX400's control panel, press **Setup**.

Note: If the printer has gone into energy saving mode, you may need to press the button twice—once to activate the printer and once to enter Setup mode.

2. Scroll to **Maintenance**. Click **OK**.
3. Scroll to **Change Ink Cartridge**. Click **OK**.
4. You'll hear the printer mechanism moving the ink carriage into place. Open the scanner by pulling up on the entire scanner unit.
5. On the ink carriage, pull back on the gray tab to open the cartridge cover.

6. Squeeze the tab on one of the ink cartridges and lift it straight up to remove it. Set the cartridge on its side on the table with the label facing up.

When you are in the store, do not open ink cartridge packages until you're ready to install the ink. Cartridges are vacuum packed to maintain reliability. Before installing a new cartridge, always shake it four or five times and remove only the yellow tape from the bottom of the cartridge; don't remove any other labels.

7. For whichever ink cartridge you removed, insert a new cartridge of the same color. Without touching the green microchip, pick up the cartridge and insert it into the ink carriage. Push down until it clicks into place.
8. Close the cartridge cover and push it down until it clicks into place.

9. Lower the scanner. Press **OK** to begin charging the ink.
10. Note: Ink charging may take about two minutes. The LCD will display a completion message when ink charging is finished. If the LCD displays a message to replace ink cartridge, either the cartridge wasn't pushed firmly into place or the ink cartridge you inserted is low on ink and that cartridge can't be reinstalled and used. To fix the problem, press **OK**, then open the scanner again and press down on all the ink cartridges.

You can also change ink cartridges when you check the ink levels on the printer:

1. On the printer's control panel, press **Setup**.
2. Scroll to **Ink Levels** and press **OK**. The screen will show the levels of each cartridge.

Note: If an exclamation point appears over one of the inks, that means the ink is getting low. Simply press the Right Arrow to highlight Change Cartridge, then press OK and follow the instructions for replacing the cartridge as you did above.

3. Press **OK** to exit the Ink Levels screen. Press the **Copy** button to exit Setup.

Note: Customers can also check ink level status through the printer driver when the unit is connected to a computer.

NX400—Using the Actuator

For the NX400, a screen demo and print file will be available on a CompactFlash card for your use in the stores, and some other models may use a USB Flash drive that gets inserted into the USB port on the back of the printer.

Because the NX400 has a LCD screen, the Actuator card features a self-running demo:

1. Insert the Actuator card into the printer's CompactFlash slot on the front of the printer.
2. The self-running demo will automatically begin.

Now you'll print the sample from the Actuator:

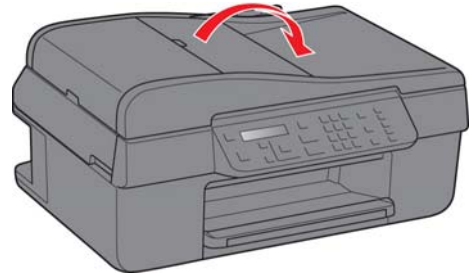
1. With the Actuator card still inserted, press the Memory Card and Down Arrow buttons simultaneously. The LCD will display "Printing" and the built-in print sample will print. It should look like the document at right.
2. Look at the printout and identify which print mode the sample is printed in – it's listed at the bottom of the page.



NX300—Copying a Two-Page Document with the ADF

In this exercise, on the NX300 you'll use the Auto Document Feeder (ADF) to make a copy of a two-page document.

1. First, press the **Copy/Fax** button to toggle between Copy and Fax mode – be sure you're in Copy mode.
2. If it's not already loaded, load Epson Bright White letter-size paper in the rear sheet feeder.
3. Open the document cover on the ADF and place the document to be copied face-up in the feeder. Adjust the edge guides for letter-size paper.



- Note: The ADF only supports letter and A4 size pages.
4. The LCD will display the current settings for the paper size, paper type and reduction/enlargement. When pages are inserted into the ADF, the printer automatically resets the settings to Letter/Plain Paper/100%. Verify these settings on the LCD; if they are not displayed then remove and reload the pages into the ADF.
 5. Verify the number of copies is set to 1, then press the **Color** button to begin copying.

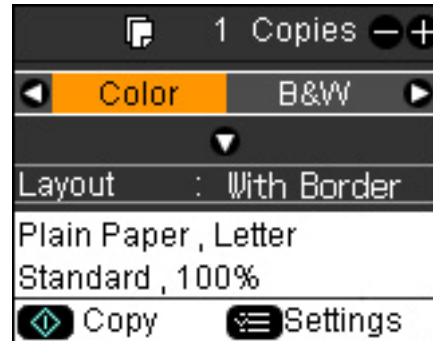
NX400—Copying a Two-Page Document Two-Sided

In this exercise, you'll copy a two-page document onto one page (two-sided) by manually reloading the paper.

1. Place page 1 of the document face-down on the scanning bed, aligning it with the arrow at the front right corner.
2. If it's not already loaded, load Epson Bright White letter-size paper into the input tray.
3. Press **Copy** to enter Copy mode. The screen will display the currently selected settings. If these settings do not read Plain Paper, Letter, Standard, 100% (as shown in the graphic below), then press **Menu** to select the following:



- Zoom: 100%
- Paper Type: Plain
- Paper Size: Letter
- Quality: Standard
- Density ± 0
- Expansion: Standard
- *Leave all other settings at the defaults*
- Press **OK** to save settings



4. Verify the number of copies is set to 1, then press the **Start** button to begin copying
5. After the first page prints, you'll now reload the paper to print on the reverse side. Pull the paper from the output tray and flip it over. Feed it bottom edge first into the input tray, with the blank side facing you as shown.
6. Remove page 1 from the scanning bed and place page 2 of the document to copy face-down on the scanning bed.
7. Press the **Start** button to copy the second page using the pre-selected settings.



NX400—Demonstrate Photo Restoration

Photo Restoration is the feature that allows you to restore color when making a reprint of an old, faded photo. The NX400 supports this feature PC-free, so all you need to do is place the old, faded photo on the scanning bed and make a copy with Photo Restore enabled.



You'll make a reprint of a 4x6 faded photo, enable photo restore, and create an enlargement to a 5x7 print.

1. Load 5x7 Premium Photo Paper Glossy into the input tray.
2. Place a faded original photo (such as the one shown above) on the scanning bed, oriented as shown at right.
3. Press the **Photo** button, then press **OK** to continue past the information screen.
4. When asked if you wish to restore colors to faded photos, press the **Right Arrow** and select **ON**. Press **OK**. Press **OK** to begin the prescan process.
5. When the image appears on the screen, the settings will default to Premium Glossy, 4x6, Borderless, Standard Quality. You'll need to change the settings to enlarge the photo to 5x7 size. Press **Menu** and verify these settings:
 - Paper Type: Premium Glossy
 - Paper Size: 5x7
 - Layout: Choose Border (to make it look exactly like the original print) or Borderless
 - Quality: Standard
 - Expansion: Standard
6. Press **OK**. Then verify the number of copies is set to 1.
7. Press **Start** to begin printing.
8. Compare the color-restored photo you printed to the faded original.

