

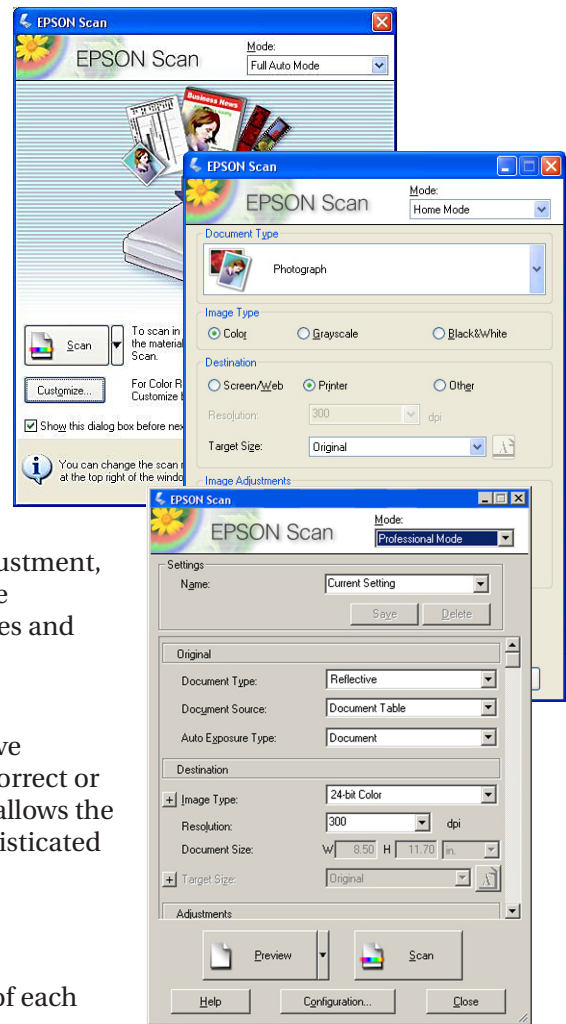
What scan features are available in the latest Epson scan driver?

Three scan modes in the Epson Scan Driver give customers complete control over scanning images. From the novice to the professional, scanning can be a one-click process or sophisticated and detailed.

Did You Know?

The newest Epson Scan software, available on the current Epson Perfection® scanners, offers three distinct scan modes to meet the needs of novice, intermediate, and advanced users.

- Full Auto Mode:**
 For the novice user—Epson Scan automatically previews the images and recognizes the document source and type. This mode then automatically crops, uses the auto-exposure settings to optimize images, and scans the image.
- Home Mode:**
 For the intermediate user—allowing adjustments of the basic image settings. Icons represent common scan settings. Available options include automatic sizing, one-touch color restoration, brightness and contrast adjustment, and destination/resolution choices. This mode allows the advanced amateur to select the best of automated features and user-controlled settings.
- Professional Mode:**
 For the advanced user—many options are available to give greater control over scanning. Customers can sharpen, correct or enhance their images before scanning them. This mode allows the advanced user to have complete control over many sophisticated elements of pre-scanning.



Check this table for some of the different scanning features of each mode (features may vary with individual scanners):

Purpose	Full Auto Mode	Home Mode	Professional Mode
Film scanning	Supported	Recommended	Recommended
Defining target size	N/A	Supported	Recommended
Optimizing brightness and color of image	N/A	Supported	Recommended
Removing moire patterns	N/A	Supported	Supported
Optimizing text or line art scanning	N/A	Supported	Supported
Scanning documents larger than document table	N/A	N/A	Recommended
Restoring color-faded image	N/A	Supported	Supported
Removing dust on film	Supported	Supported	Supported
Backlight correction	N/A	N/A	Supported
Adjusting color palette	N/A	N/A	Supported