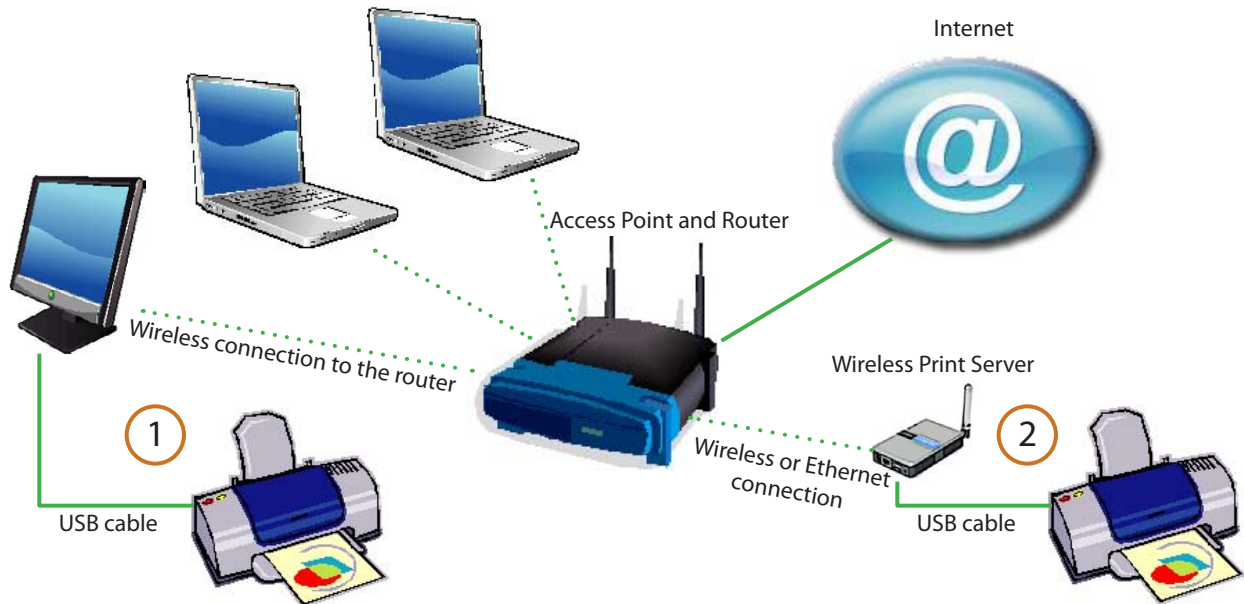




## How can Epson ink jet printers and all-in-ones without built-in wireless be set up on a wireless home network?

Many home networks are designed specifically for sharing broadband access to the Internet where computers (desktops or notebooks) are connected to the Internet via an access point and router. Epson ink jet printers and all-in-one printers without built-in wireless networking can be connected to this type of network in two general ways:



### 1 Printer Sharing Over the Network

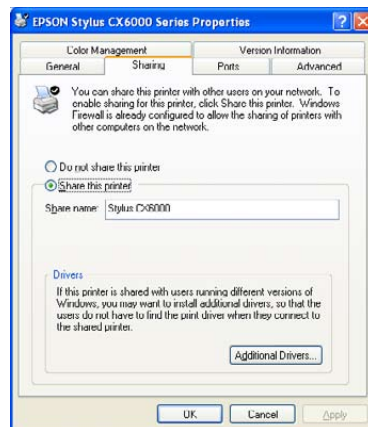
Attach the printer to one computer on the network via a USB cable. To allow other computers on the network to use the printer, enable printer sharing (Windows or Macintosh).

Advantages:

- Doesn't require additional hardware or software

Disadvantages:

- For all-in-ones, scan functions can't be shared; they can only be used on the attached computer
- Computer attached to the shared printer must always be on for other computers to access the printer



### 2 External Wireless Print Server

Wireless Print Servers are available from many third-party manufacturers, and most connect to a printer's or all-in-one's USB port. The print server acts as a mini computer which manages print jobs sent to the printer from any computer on the network.

Advantages:

- No need to have a dedicated computer always on
- The networked printer can be located anywhere in the house (within range of the network)
- Some newer devices now allow all-in-one functions (such as scanning) to be shared
- Since these devices use the standard USB protocol, they support most printers and all-in-ones that use a USB port

Customers should check with the wireless print server manufacturer for compatibility.